

ISO 9001:2008 certified

phc[®] Suite



bringing technology closer to life

www.yusata.com

About DPC® Suite

About us: DP&C® Suite is designed to provide return on investment through enhanced process and asset management, and to increase infrastructure capability that enables profitable growth.

- **Enhance real time information visibility:** DP&C® Suite synchronizes the real-time movement of material, information, and working capital across the entire supply chain.
- **Designing Efficient and Cost-Effective Commerce:** Suite is uniquely positioned to meet the demands of the speed of business in the 21st Century. Enhance weak links in the supply chain.
- **Increase Efficiency:** The customized DP&C® solution involves both analysis and implementation of systems and processes to improve shop floor flow, enhance process and procedures and strengthen documentation process.

Supply Chain Solution Suite V2.0
Resource Manager & Capacity Analyzer
Spray-Tek Tel: 732-488-0050 Fax: 732-382-0955

Administration | Module Maintenance | Operations | Management Dashboard | Business Analyzer

Org: MIDDLESEX-NJ Welcome: SUNIL

MES Management Summary ALCOHOL SHIPPING MANAGEMENT REPORTS

Management Summary

Run#	Order#	Order Date	Completion Date
<input type="checkbox"/>	NJSD124310	11599	26-Feb-2013
<input type="checkbox"/>	NJSD123870	11590	22-Feb-2013
<input type="checkbox"/>	NJSD123860	11589	22-Feb-2013
<input type="checkbox"/>	NJSD123850	11588	22-Feb-2013
<input type="checkbox"/>	NJSD123820	11584	22-Feb-2013
<input checked="" type="checkbox"/>	NJSD123810	11581	22-Feb-2013
<input type="checkbox"/>	NJSD123840	11568	21-Feb-2013
<input type="checkbox"/>	NJSD123490	11565	20-Feb-2013
<input type="checkbox"/>	NJSD123480	394001	20-Feb-2013
<input type="checkbox"/>	NJSD123460	11547	19-Feb-2013
<input type="checkbox"/>	NJSD123330	11591	17-Feb-2013
<input type="checkbox"/>	NJSD123320	11572	17-Feb-2013
<input type="checkbox"/>	NJSD123310	11595	17-Feb-2013
<input type="checkbox"/>	NJSD123300	11577	17-Feb-2013
<input type="checkbox"/>	NJSD123290	11575	17-Feb-2013
<input type="checkbox"/>	NJSD123280	11583	17-Feb-2013
<input type="checkbox"/>	NJSD123270	11549	17-Feb-2013
<input type="checkbox"/>	NJSD123260	11566	17-Feb-2013
<input type="checkbox"/>	NJSD123000	11543	15-Feb-2013
<input type="checkbox"/>	NJSD122890	11541	12-Feb-2013

Header Details

Order#: 11581 MFG LOT#: NJSD123810 Dryer: Dryer #1 @ 300 LB
 Customer: ConAgra Food Ingredients Customer PO#: 405657 Customer contact: Y
 Product: (10420-0000) - Nat Fresh Tomato Type FI GEN 6341J Customer Lot#: 1304400007
 Size: 1334 Solids: 600 Container: 50 LB BOXES
 Inlet temperature Min: Max: AVG: Outlet temperature Min: Max: AVG:

Label Uses Operator Summary Detail Sign Off & Close

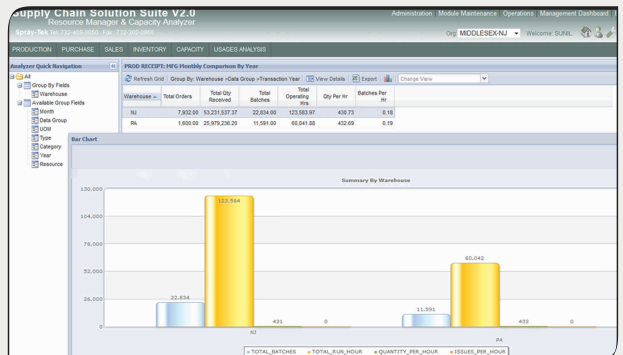
[PLANNED vs Actual]	Planned	Actual	Variance
START DATE	22-FEB-13 15:29	23-FEB-13 23:02	1.31
COMPLETION DATE	23-FEB-13 01:09	24-FEB-13 00:30	.97
RUN HOURS	9.67	1.47	-8.2
QUANTITY	600.3 [100%]	574.4 [95.69%]	-25.9
SOLIDS	45	45	0
UTILIZATION	62.08	390.75	null
NO OF BATCHES	1	1	N/A
TOTAL DAYS	.4	.06	-.34
TOTAL EFFICIENCY	100	null	null
MOISTURE	0	Min: 3.75% Max: 3.75%	null

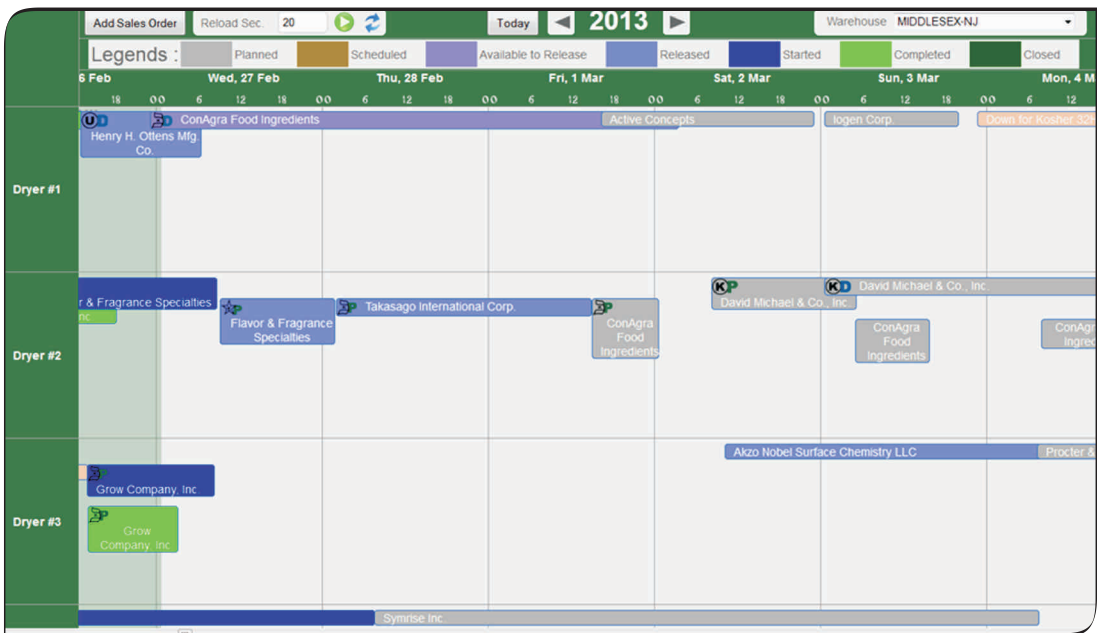
Run# Documents

- [Pre Shipment Report](#)
- [Contract Manufacturing Report](#)
- [Label Reconciliation Report](#)
- [Pachout Details](#)
- [Batching Details](#)
- [Shipment Report](#)
- [Misc Packout Report](#)
- [Pick List](#)
- [Sanitation Sheets](#)
- [Cleaning Sheets](#)
- [HACCP](#)
- [Misc material](#)

Features

- **Easy Order Management**
- **Business Intelligence(Analyzer)**
- **Useful Customizable Dashboard**
- **Simple Batch Process**
- **Role Based Screens**





Corporate Office (USA)

197 Route 18, South East Brunswick, NJ 08816, USA
Tel. +1.732.514.6604

R&D Division (INDIA)

IT-27, EPIP, Sitapura, Jaipur, RAJ - 302022, INDIA
Tel. +1.91.141.2970578



DPC Suite



www.yusata.com

info@yusata.com